

*Clinker production capacity will move up to 1400 tonnes per day and kiln will be running for 26 days in a month moving EAPC-PLC reliability to over 90%.*

# PORTLAND NEWS DESK



Official Newsletter of the East African Portland Cement PLC

ISSUE 001-AUGUST 2022

## FROM THE EDITOR

**Happy August Newsdesk reader,**

Newsdesk publication the official weekly newsletter of the East African Portland Cement PLC is back after a short break. Our new look design incorporating short stories, news and updates is aimed at making it easy to read. Should you have any update, news or any item you wish to share with the E.A Portland community please do so through email:

[Yasmin.haroub@eapcc.co.ke](mailto:Yasmin.haroub@eapcc.co.ke), [kelvin.gitonga@eapcc.co.ke](mailto:kelvin.gitonga@eapcc.co.ke) or extension 5142 / 5542 .

*Enjoy this edition!*

**- Newsdesk Editor**



**East African Portland Cement PLC**

*— Holding Life Together —*

## KILN SHELL REPLACEMENT

**THE BOARD OF DIRECTORS HAS APPROVED THE** highly anticipated kiln shell replacement. The nerve of East African Portland Cement operations is the kiln where a raw mix of limestone, kunkur, bauxite and iron-ore is fed and burned up to 1450 °C to form clinker which is the intermediate product of cement.

According to the Managing Director, Mr. Oliver Kirubai, the shut down and factory upgrade are part of the strategic plan. Reiterating that due to the high costs of energy and an old clinker line, the board has prioritized efficiency and reliability of our integrated plant operations to drive cost optimization.

The project, expected to last 45 days begun with pre- shutdown activities in June 2022 and officially kicked off on Monday, 25th July 2022. The project team comprises of EAPC-PLC Engineers, production staff & subcontracted experts from Kenya and abroad. The team is led by our Head of Plant Operations, Eng. Stanley Irungu.

**<<< Continue on page 2**

# A Journey towards **efficiency,** higher **productivity** Begins

<<< *Continue from page 1*

The 54m long kiln is divided into different zones reflecting different reactions taking place, at the extreme exit end is the burning zone where hot gases are intensive. The burning zone which is extensively damaged will see a replacement of 16.5 meters section in the ongoing kiln shell replacement project.

Kenya currently has 13 cement plants with only 4 cement plants with integrated clinkering and capabilities. This highlights

the importance of the ongoing kiln shell replacement to sustain EAPC-PLC competitiveness in the market.

According to Head of Plant Operations at EAPC-PLC, Mr. Irungu, the Blue Triangle Cement will still be available and customers will continue enjoying provision of quality cement as the kiln upgrade project continues, Further adding that the production of clinker capacity will move to up to 1400 tonnes

per day and the kiln will be running for 26 days in a month moving EAPC-PLC reliability to over 90%.

On his part Head of Corporate Affairs and Strategy and Ag. Head of Commercial Mr. Gordon Mutugi. said that “the company has suffered product shortage in the market as a result of difficulties with the dilapidated equipment on the clinkering process, but after the replacement this will be a matter of the past”.

As Curtains finally draw here at EAPC- PLC with the much awaited process of kiln shell replacement, this will be a huge step for the company that has been navigating through financial crisis to finally place the wheels of a giant cement company to where they belong.

East African Portland Cement Company- PLC one of Kenya’s leading cement manufacturer and oldest economic machines which has cemented most of our country’s construction sector into the new skyline now defining major cities.

- *Yasmin .H. Haroub | Newsdesk Editor*



*De-bricking of the inner kiln shell.*

---

## BLUE TRIANGLE CEMENT; OUR KILN IN NUMBERS

# 1996

This the year the current EAPC-PLC kiln installation took place.  
.....

# 45days

Duration the process will take to complete the installation of the new kiln.  
.....

# 54metres

This is the full length of the current kiln whose diameter is 3.7 meters.  
.....

# 16.5metres

The section of the burning zone to be replaced.  
.....

# KILN SHELL REPLACEMENT

July-August 2022

## WEEK 1

### MOBILIZATION



- Kiln cold alignment;
- Marking of the cut areas;
- Supporting the remaining sections of the kiln;
- Removal/ cutting of the positions to be replaced.

## WEEK 2

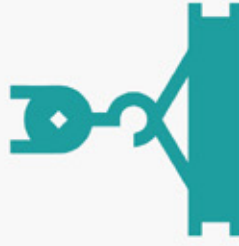
### KILN SHELL MEASUREMENTS

- Installation of the second tyre into the new heavy section and installation of the heavy section.



## WEEK 3

### OLD KILN CUTTING



- Installation of the other three positions .

## WEEK 4

### Kiln Shell Replacement Process

### NEW KILN SHELL REPLACEMENT

- Confirmation of the alignment before the actual joining through auto welding.
- Confirmation of the integrity of welding through NDT- (Non destructive testing).



## WEEK 5

### REFRACTORY WORKS



- Installation of the new kiln brick lining as we decommission through external support structures.

## WEEK 6

### COMMISSIONING

Commissioning and restarting of the plant.



## ON THE SPOT

# Stanley Irungu: Head of Plant Operations leading the Kiln Upgrade Project



**THE HIGHLY SENSITIVE KILN SHELL** replacement project is being led by the Head of Plant Operations, Eng. Stanley Irungu, a graduate engineer in good standing with EBK (Engineers Board of Kenya) & IEK (Institute of Engineers of Kenya.) He joined East African Portland Cement PLC In January 2012 as a Process Engineer.

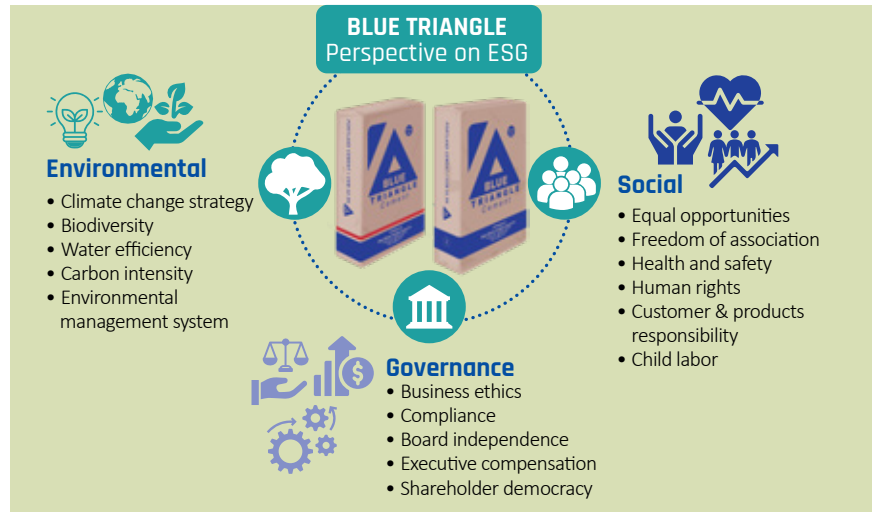
He holds a Master of Science in Industrial Engineering and Management from Dedan Kimathi University of Technology, Bachelor of Technology in Chemical and Process Engineering from Moi University. He has attended various professional trainings including, Lafarge approved cement professional courses, mill audit gas handling, pyro-processing, introduction to quality and cement products, safety lead auditors training, among others.

He has 15 years experience in the manufacturing sector having worked for established companies including Bamburi Cement Company, Hima Cement Company, Kenya Wine Agencies Limited, Kel Chemicals Limited before joining East African Portland Cement PLC.

Newsdesk team wishes Eng Irungu success as he leads us through this important project.

– *Brian Tenkia | Corporate Affairs*

## SUSTAINABILITY UPDATES



# Cutting down on Energy, Increasing Efficiency

## THE ONGOING KILN SHELL

replacement is expected to inject productivity and cut down energy use at the factory. In addition to this mega project, we have embarked on a noble journey to integrate ESG (Environment, Social and Governance) in our overall business operation strategy to ensure that we extend ESG and sustainability into our value chain.

By integrating ESG into our business strategy, EAPC will play a very key role in ensuring that we address climate change impact, social and governance risk to not only create a quality working environment for our internal stakeholders but also disclose and report on all the three ESG pillars to our external stakeholders’.

As it is clearly set out in our strategic plan, EAPC will focus on addressing all the physical and transition risks related to evolving consumer behavior in response to climate change or

environmental concerns. We are and remain committed to reducing carbon emissions in line with UN sustainable development goals on Climate action SDG 13, mainly through reducing our carbon emissions.

EAPC is keen to address matters social risks, however minimal, by ensuring issues diversity and inclusion, human capital, and health and safety are strategically implemented in all the business units of the organization.

ESG implementation, monitoring, evaluation and reporting will be a key focus to the organization as a commitment to our stakeholders to ensure we not only address our customer needs but also empower our communities to enhance our brand differentiation and market competitiveness. EAPC will also address matters governance risk because it is tied to the company’s culture, and strategy.

In our quest to reduce our carbon emissions and promote our H&S initiatives, the company is undertaking the 45 day highly anticipated kiln shell replacement that will play a significant role in reducing the energy used in our cement production process by reducing the energy used in our cement production process.

– *Pamela Muthui | Public Relations Officer*

**“EAPC WILL PLAY A  
VERY KEY ROLE IN  
ENSURING THAT WE  
ADDRESS CLIMATE  
CHANGE IMPACT.”**