



# PORTLAND NewsDesk

OFFICIAL NEWSLETTER OF THE EAST AFRICAN PORTLAND CEMENT PLC

## Board Technical Committee Inspects The Shutdown Progress

By Kelvin Gitonga  
CORPORATE COMMUNICATIONS OFFICER



The Board Technical Committee with some members of Executive Committee outside the Kiln

**E**arly in the morning on March 26th, 2024, the Board Technical Committee visited the Factory to get an update of the Shutdown progress. The committee comprises of Mr. Patrick Tutui, Prof. Sarone Ole Sena, Mr. Kung'u Gatabaki, Mr. Edward Wamweya, Mr. Daniel Mwangagi and Mr. Gerald Mwangi.

Their visit started by a meeting in the Boardroom whereby they were briefed on the works ongoing at the plant and the progress so far.

After the meeting the Directors were joined by Ag. Managing Director Mr. Mohamed Adan, Company Secretary Ms. Florence Mitey, Head of Supply



The Board Technical Committee Members pose for a photo with Colleagues at the Mechanical Workshop



The Board Technical Committee inside the Kiln

Chain Mr. Moses Sudi, Head of Plant Operations Mr. Japheth Ombogo, Head of Human Resources Mr. Joel Kemei, Corporate Affairs Manager Ms. Pamela Muthui and Employee Relations Manager Mr. Haron Kisemei among other Colleagues for a Factory Tour in order for them to appreciate the jobs been done in various sites.

After a Safety Induction by the Safety Health and Environment Manager Mr. GG Wachira the entourage first visited the Kiln where they were impressed by the installation of Refractory Bricks ongoing. They were informed that the team is covering up to 5 Metres of the Kiln Shell per day. After the Kiln, the Directors inspected ongoing jobs at the Baghouse, Coal Mill, Atox Mill and the Grate Cooler. They were particularly impressed to learn that the Company is taking the Shutdown very seriously and has engaged some of the most competent contractors to undertake the various jobs.

Speaking after the tour, Director Patrick Ole Tutui noted that their tour meant to show solidarity with the team working on various parts of the Plant and all Colleagues. "We are here to show our support for the Shutdown and the Company's Turnaround endeavors as a whole. The successful completion of this job will be a victory to all of us. I want to commend the team for their great effort and wish them all the best as they complete this critical step in our journey to greatness", said Mr. Tutui.

# Turnaround Maintenance Update

By Yasmin Hamdan

**A**s the EAPC-PLC Factory progresses through its Turnaround Maintenance Shutdown, significant achievements and continued dedication towards enhancing operational efficiency and reliability have been noted. With each passing day, the commitment of the Maintenance Team shines brighter, ensuring that critical components undergo thorough inspection and refurbishment.

One notable milestone attained is the completion of the debricking process in the Kiln and rebricking correctly at 85%. This pivotal task, executed with precision and expertise, ensures the optimal functioning of the kiln, a cornerstone of the factory's production process.

Meanwhile, an overhaul of the cooler is ongoing, reflecting the meticulous approach adopted by the maintenance crew. Recognizing

the vital role of the Cooler in manufacturing high quality Clinker and process efficiency, the team is sparing no effort in addressing any build-up or deterioration. These proactive measures ensure uninterrupted production and upholds the factory's commitment to excellence.

Additionally, the replacement of filter bags is 95% done, awaiting Commissioning, while the job in the cooler is 66% complete. These essential components play a crucial



The shutdown team working on the Kiln's burner pipe



Ongoing jobs at the grate cooler

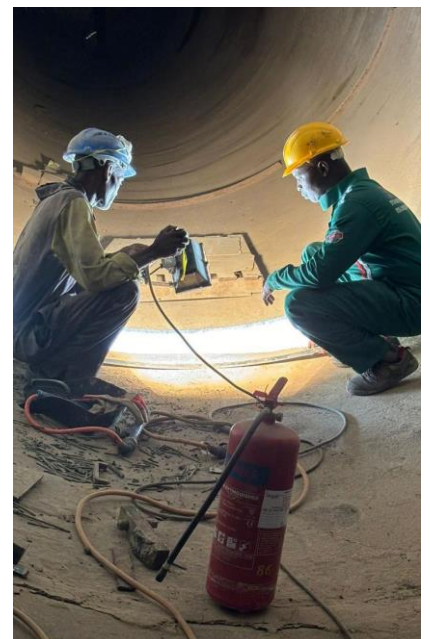
role in maintaining environmental standards and optimizing air quality within the factory premises. Through the systematic installation of new filter bags, the EAPC-PLC Factory reaffirms its dedication to sustainability and environmental responsibility.



Mr. James Wambua from Mechanical Engineering doing what he does best at the Kiln's Platform

Simultaneously, a major overhaul of the Coal Mill is in full swing, underscoring the factory's proactive approach to equipment maintenance. The meticulous attention given to the Coal Mill's refurbishment ensures its reliability and longevity, essential for sustaining uninterrupted production operations.

As the maintenance activities progress, the EAPC-PLC Factory remains committed to upholding its reputation for operational excellence and environmental stewardship. With a clear focus on quality, reliability, and sustainability, the factory is poised to emerge from the shutdown stronger and more resilient than ever before, ready to meet the demands of a dynamic market landscape.



Colleagues go on their duties in the Kiln.



Pupils of Kibini Primary School prepare to plant trees

# School Tree Planting Programme Phase 1

By Hilda Kulei  
CORPORATE AFFAIRS

The Company continues to support the Government's Agenda of increasing the Country's Forest Cover by planting at least 15 Billion trees by 2032. To this end, the Company has launched a School Tree Planting drive that seeks to plant trees in schools within the communities in which we operate i.e. Kibini, Bissil and Athi River. This is also in line with Pillar Number 5 of our Five Year Strategic Plan, A Better Planet.

The first phase of the Tree Planting Drive took place on 21st and 22nd March 2024 in Kibini Community. A team from Corporate Affairs and Environment visited three schools in the area, Kibini Primary School, Sunde Primary School and Endonyo Enker Primary Schools where they donated seedling and joined the Pupils and Staff of the schools in tree planting activities. Each of

the school received at least 940 seedling of different species some of which were planted immediately and others stored in the schools' tree nurseries to be planted later.

To ensure sustainability of the trees, the schools selected needed to have enough water for the trees and a fence to keep away livestock that usually destroy non protected trees. The team also gave talks on how to ensure that the plants mature and each pupil was required to adopt at least five trees and ensure they mature. Speaking at Sunde Primary School, Environment Officer Ms. Judith Mailu noted that trees are very important to the environment. She urged the pupils and teachers to plant as many trees as possible in order to reverse Climate Change. "If we take care of our environment, then the environment will also take care of us", noted Judith.



A Girl from Endnyo Enker Primary School is assisted to water a tree she planted by a Teacher



Pupils from Kibini Primary School actively participate in the Tree Planting Dive